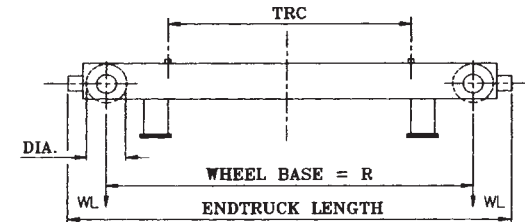


**Double Girder Crane
Type ZLK9**



- Notes:
1. Runway electrification is standard on left side.
 2. Wheel loads do not include impact.
 3. Shipping weights include hoist and trolley.

WHEEL LOADS INDICATED WITHOUT IMPACT OR WALKWAY

Cap. Tons	Hoist			Trolley			Endtruck				Bridge							Wheel Load Lbs.	Shipping Weight Lbs.						
	Type Reeving Rope Dia.	Speed FPM HP	Lift Ft.	Type Weight	HP per Motor 80/20 FPM VFD	TRC In.*	Wheel		HP per Motor 120 VFD	Span Ft.	L1 In.	L2 In.	C1 In.	A1 In.	K1 In.	Z In.									
							Dia. In.	Base Ft.-In.									Length Ft.-In.			Dia. In.	Base Ft.-In.	Length Ft.-In.			
40	6360 6/1 0.75	9.0/1.5 26/4.3	13	EM6360L6 091.61.040 4750 lbs.	2 x 0.75	78.75	12	8'-10"	10'-11"	2x3.0	24	48	48	6	16	56	8	38248	18767						
						78.75												39636	19842						
						78.75												40987	24290						
						78.75												42090	26162						
						78.75												43053	27885						
			22	EM6360L6 091.61.060 5168 lbs.	2 x 0.75	22	EM6360L6 091.61.060 5168 lbs.	2 x 0.75	78.75	16	9'-6"	12'-0"	2x5.0	44	48	3	20	59	8	43993	30026				
									78.75											48294	31420				
									78.75											49286	34369				
									78.75											50040	36511				
									98.5											51095	39976				
	33*	EM6360L6 091.61.100 7612 lbs.				2 x 0.75	33*	EM6360L6 091.61.100 7612 lbs.	2 x 0.75	98.5	16	10'-6"	13'-0"	2x5.0	64	48	3	22	59	8	51681	41661			
										98.5											52600	44745			
										98.5											53170	46513			
										98.5											54582	51619			
										98.5											55491	54911			
	40	6360 6/1 0.75	9.0/1.5 26/4.3	33*	EM6360L6 091.61.100 7612 lbs.	2 x 0.75	98.5	20	12'-6"	15'-0"	2x7.5	76	48	48	3	24	59	8	54582	51619					
							98.5												55491	54911					
							98.5												56560	58807					
							98.5												57324	61525					
							98.5												58204	64729					
40							6360 6/1 0.75	9.0/1.5 26/4.3	33*	EM6360L6 091.61.100 7612 lbs.	2 x 0.75	98.5	20	13'-6"	16'-4"	2x7.5	88	48	48	3	32	59	8	57324	61525
												98.5												58204	64729
												98.5												59360	69058
												98.5												60552	73567
												98.5												60552	73567