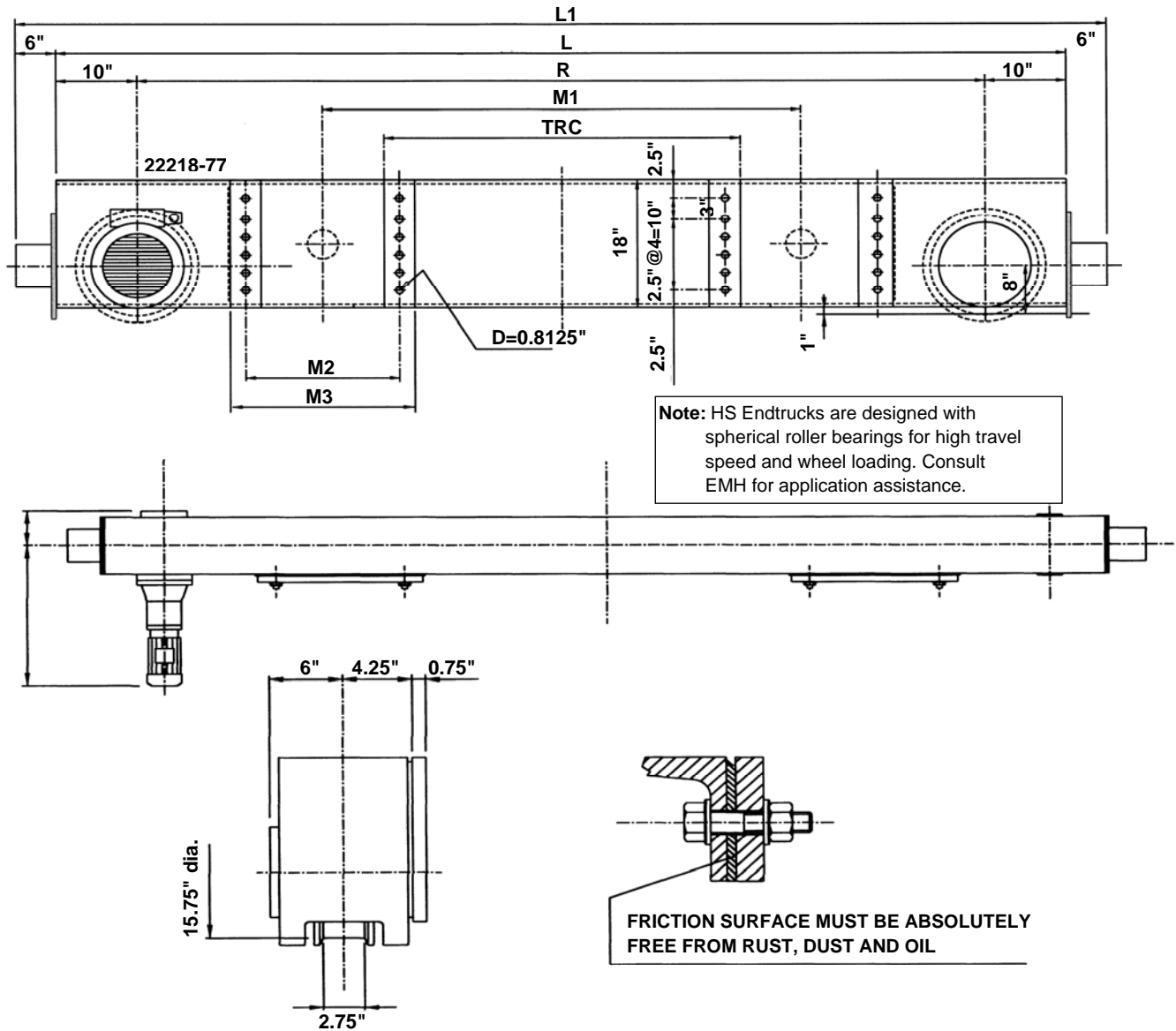


## Specifications for EMH Style HS-400 Top Running Double Girder End Trucks 16 In. Diameter Wheels



Model No.	Wheel Load	Moving Mass Lbs. 200 fpm VFD	Wheel Base (R) Ft.-In.	200 fpm Motor HP	L Ft.-In.	L1 Ft.-In.	M1 In.	M2 In.	M3 In.	TRC In.	Weight per Pair
HS-400.480.3200.5.16	52,000	169,500	10-6	2 x 7.5	12-2	13-2	79	20	24	63	4,250
HS-400.480.3800.5.20	52,000	169,500	12-6	2 x 7.5	14-2	15-2	94.75	20	24	78.75	4,630
HS-400.480.4100.5.25	52,000	169,500	13-6	2 x 7.5	15-2	16-2	114.5	20	24	98.5	5,260
HS-400.480.4600.6.25	52,000	169,500	15-0	2 x 7.5	16-8	17-8	118.5	24	28	98.5	5,690