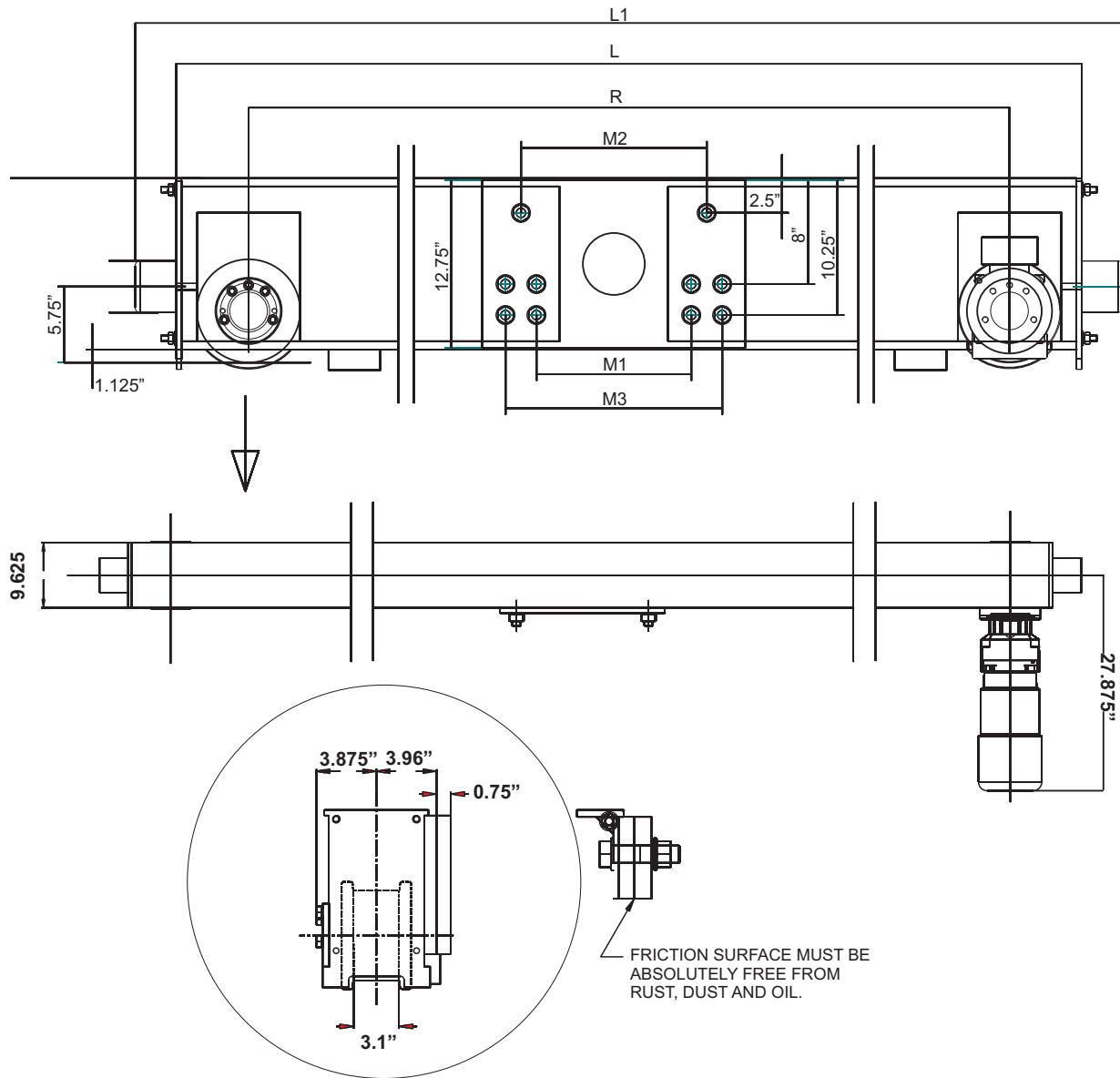


# Specifications for EMH Style HSE200 Top Running Single Girder Endtrucks 8 in. Diameter Wheels



Model No.	Wheel Load	Moving Mass Lbs.	120 fpm Motor HP	Wheel Base (R) Ft.-in.	L Ft.-in.	L1 Ft.-in.	M1 In.	M2 In.	M3 In.	M4 In.	Wt. per Pair
HSE-200.324.1900	23,450	63,000	2 x 1.5	6-3	7-2	7-9	12	14.25	16.5	20	1106
HSE-200.324.2200	23,450	63,000	2 x 1.5	7-3	8-2	8-9	12	14.25	16.5	20	1186
HSE-200.324.2700	18,850	63,000	2 x 1.5	8-10	9-9	10-4	12	14.25	16.5	20	1426
HSE-200.324.3200	19,900	63,000	2 x 1.5	10-6	11-5	12-0	12	14.25	16.5	20	1786
HSE-200.324.3800	16,750	63,000	2 x 1.5	12-6	13-5	14-0	12	14.25	16.5	20	2026