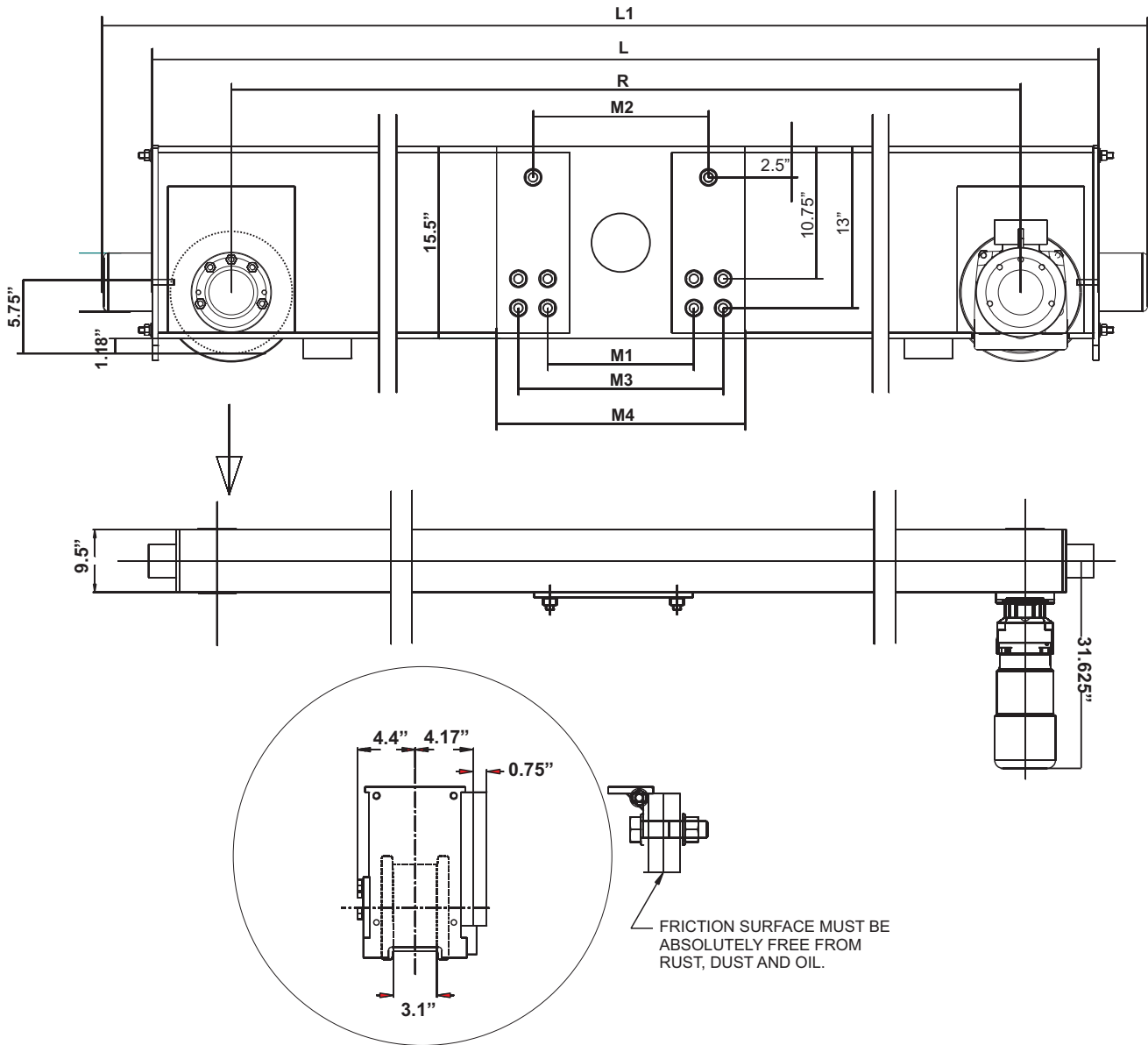


# Specifications for EMH Style HSE250 Top Running Single Girder Endtrucks 10 in. Diameter Wheels



Model No.	Wheel Load	Moving Mass Lbs.	120 fpm Motor HP	Wheel Base (R) Ft.-In.	L Ft.-In.	L1 Ft.-In.	M1 In.	M2 In.	M3 In.	M4 In.	Weight per Pair
HSE-250.394.1900	34,950	93,500	2 x 2.0	6-3	7-3	7-11	11.75	14.25	16.5	20	1882
HSE-250.394.2200	30,200	93,500	2 x 2.0	7-3	8-3	8-11	11.75	14.25	16.5	20	1992
HSE-250.394.2700	24,600	93,500	2 x 2.0	8-10	9-10	10-6	11.75	14.25	16.5	20	2172
HSE-250.394.3200	20,750	93,500	2 x 2.0	10-6	11-6	12-2	11.75	14.25	16.5	20	2382
HSE-250.394.3800	18,700	93,500	2 x 2.0	12-6	13-6	14-2	11.75	14.25	16.5	20	2792