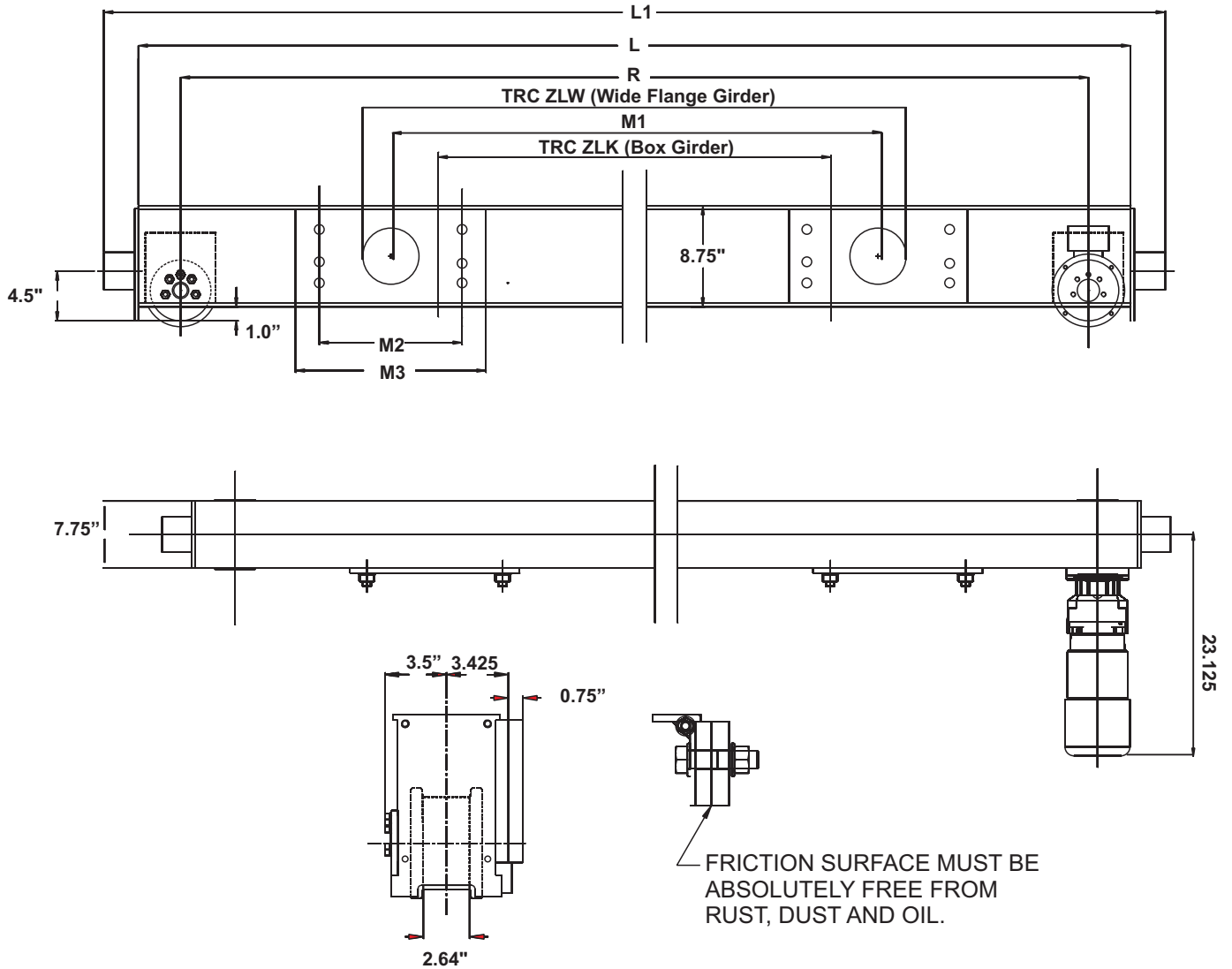


Specifications for EMH Style HSZ130 Top Running Double Girder Endtrucks 5 in. Diameter Wheels



| Model No. | Wheel Load | Moving Mass Lbs. | 120 fpm Motor HP | Wheel Base (R) Ft.-In | L Ft.-In. | L1 Ft.-In. | M1 In. | M2 In. | M3 In. | TRC ZLK In. | TRC ZLW In. | Weight per Pair |
|------------------|------------|------------------|------------------|-----------------------|-----------|------------|--------|--------|--------|-------------|-------------|-----------------|
| HSZ-130.224.2700 | 11,240 | 24,000 | 2 x 0.75 | 8-10 | 9-6 | 10-0 | 71 | 12 | 16 | 63 | N/A | 900 |
| HSZ-130.224.2900 | 11,240 | 24,000 | 2 x 0.75 | 9-6 | 10-2 | 10-8 | 75 | 16 | 20 | 63 | 78.75 | 1080 |
| HSZ-130.224.3200 | 11,240 | 24,000 | 2 x 0.75 | 10-6 | 11-2 | 11-8 | 75 | 16 | 20 | 63 | 78.75 | 1140 |
| HSZ-130.224.3800 | 11,240 | 24,000 | 2 x 0.75 | 12-6 | 13-2 | 13-8 | 94.75 | 20 | 24 | 78.75 | 98.5 | 1610 |
| HSZ-130.224.4600 | 9,100 | 24,000 | 2 x 0.75 | 15-0 | 15-8 | 16-2 | 114.5 | 20 | 24 | 98.5 | N/A | 1830 |