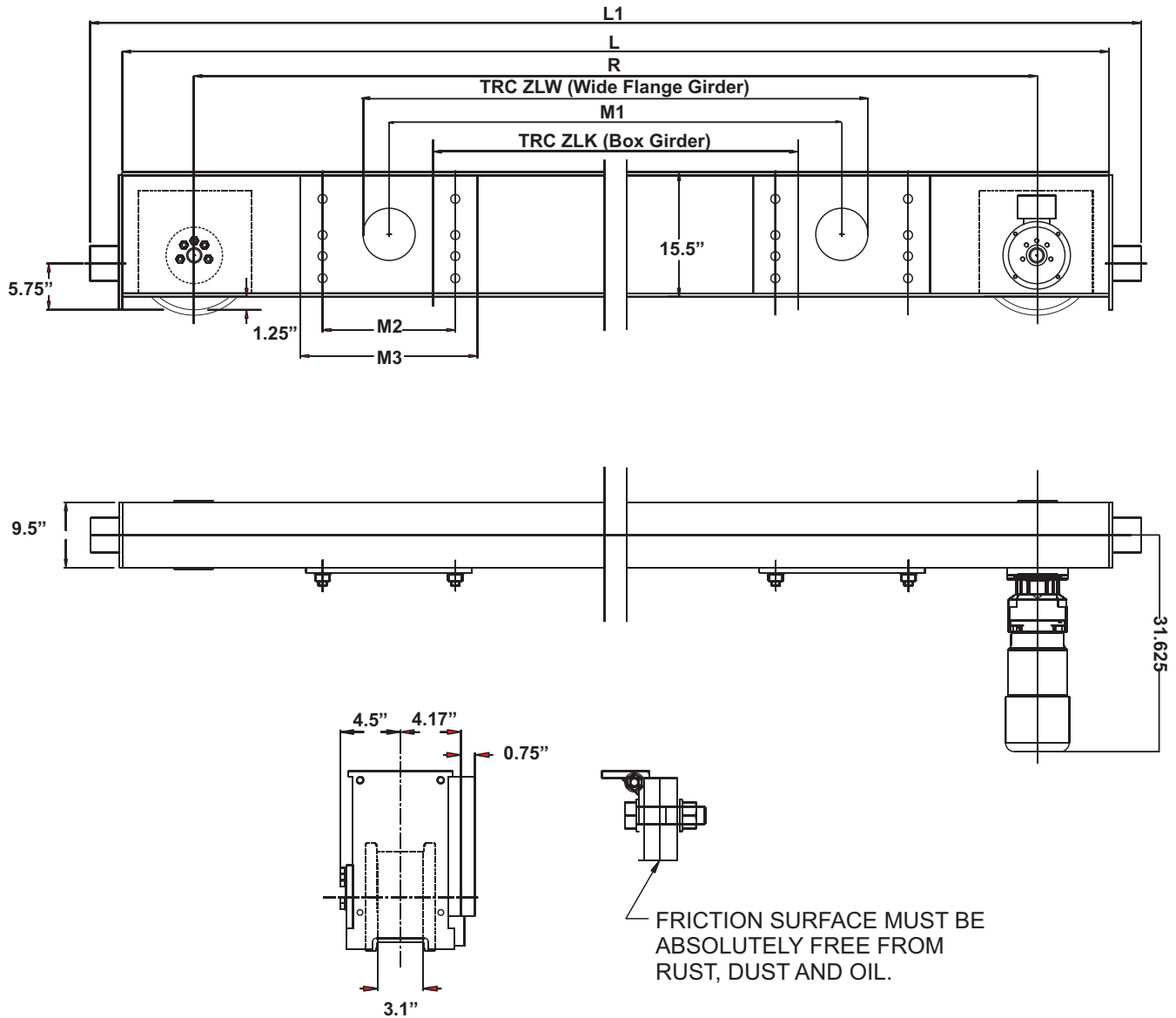


Specifications for EMH Style HSZ250 Top Running Double Girder Endtrucks 10 in. Diameter Wheels



Model No.	Wheel Load	Moving Mass Lbs.	120 fpm Motor HP	Wheel Base (R) Ft.-In.	L Ft.-In.	L1 Ft.-In.	M1 In.	M2 In.	M3 In.	TRC ZLK In.	TRC ZLW In.	Weight per Pair
HSZ-250.395.2700	38,210	93,500	2 x 2.0	8-10	9-10	10-6	71	12	16	63	N/A	2,140
HSZ-250.395.2900	38,210	93,500	2 x 2.0	9-6	10-6	11-2	75	16	20	63	78.75	2,260
HSZ-250.395.3200	38,210	93,500	2 x 2.0	10-6	11-6	12-2	79	20	24	63	78.75	2,520
HSZ-250.395.3800	38,210	93,500	2 x 2.0	12-6	13-6	14-2	94.75	20	24	78.75	98.5	2,990
HSZ-250.395.4600	33,560	93,500	2 x 2.0	15-0	16-0	16-8	114.5	24	29	98.5	N/A	3,320