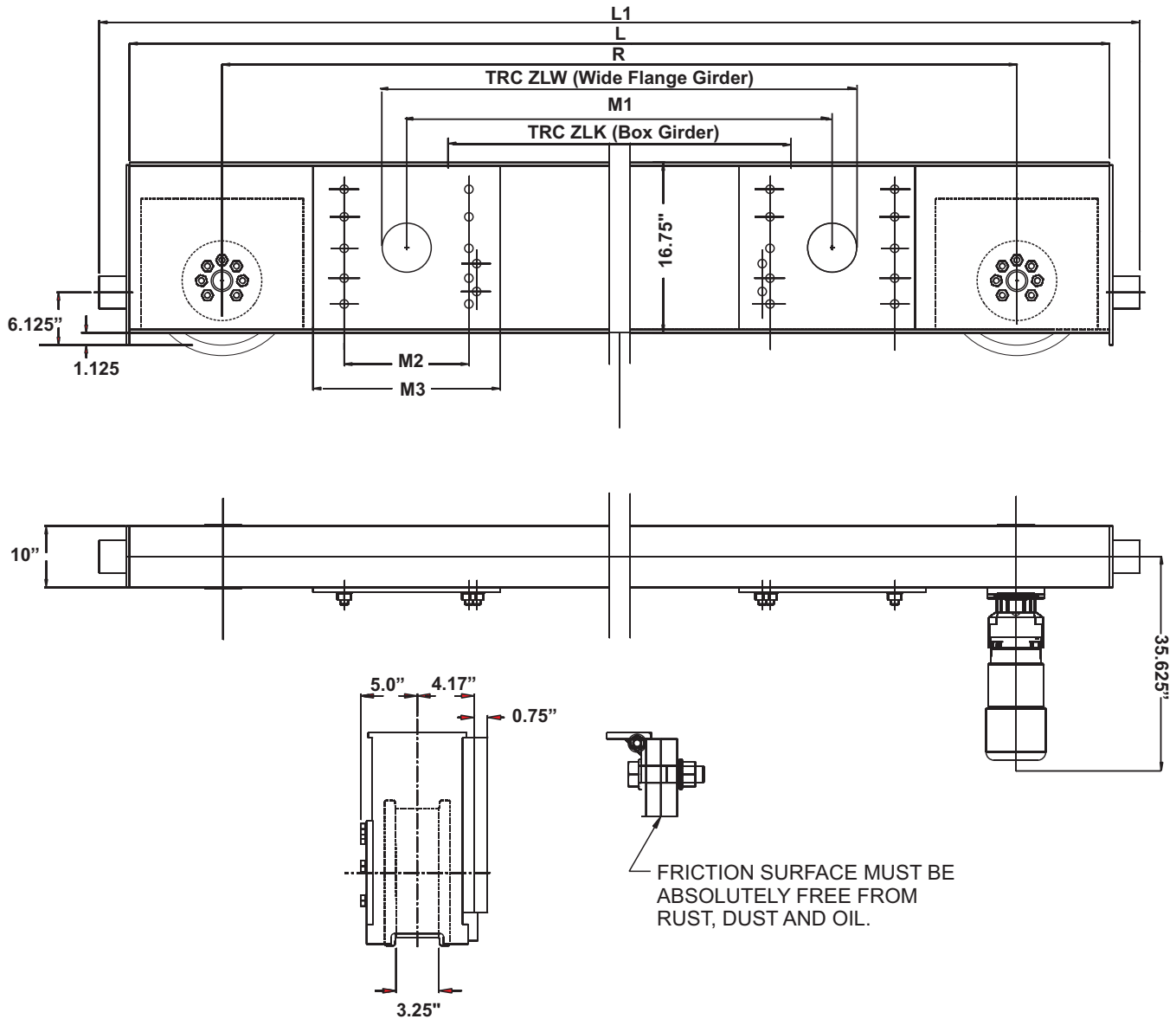


Specifications for EMH Style HSZ315 Top Running Double Girder Endtrucks 12 in. Diameter Wheels



Model No.	Wheel Load	Moving Mass Lbs.	120 fpm Motor HP	Wheel Base (R) Ft.-In.	L Ft.-In.	L1 Ft.-In.	M1 In.	M2 In.	M3 In.	TRC ZLK In.	TRC ZLW In.	Weight per Pair
HSZ-315.425.2700	48,550	140,000	2 x 3.0	8-10	10-2	10-11	71	12	17.5	63	N/A	2,720
HSZ-315.425.2900	48,550	140,000	2 x 3.0	9-6	10-10	11-7	75	16	21.25	63	78.75	3,020
HSZ-315.425.3200	48,550	140,000	2 x 3.0	10-6	11-10	12-7	79	20	25.25	63	78.75	3,380
HSZ-315.425.3800	48,550	140,000	2 x 3.0	12-6	13-10	14-7	94.75	20	25.25	78.75	98.5	3,660
HSZ-315.425.4100	48,550	140,000	2 x 3.0	13-6	14-10	15-7	114.25	20	25.25	98.5	N/A	3,800
HSZ-315.425.4600	48,840	140,000	2 x 3.0	15-0	16-4	17-1	118.5	24	29.25	98.5	N/A	4,040