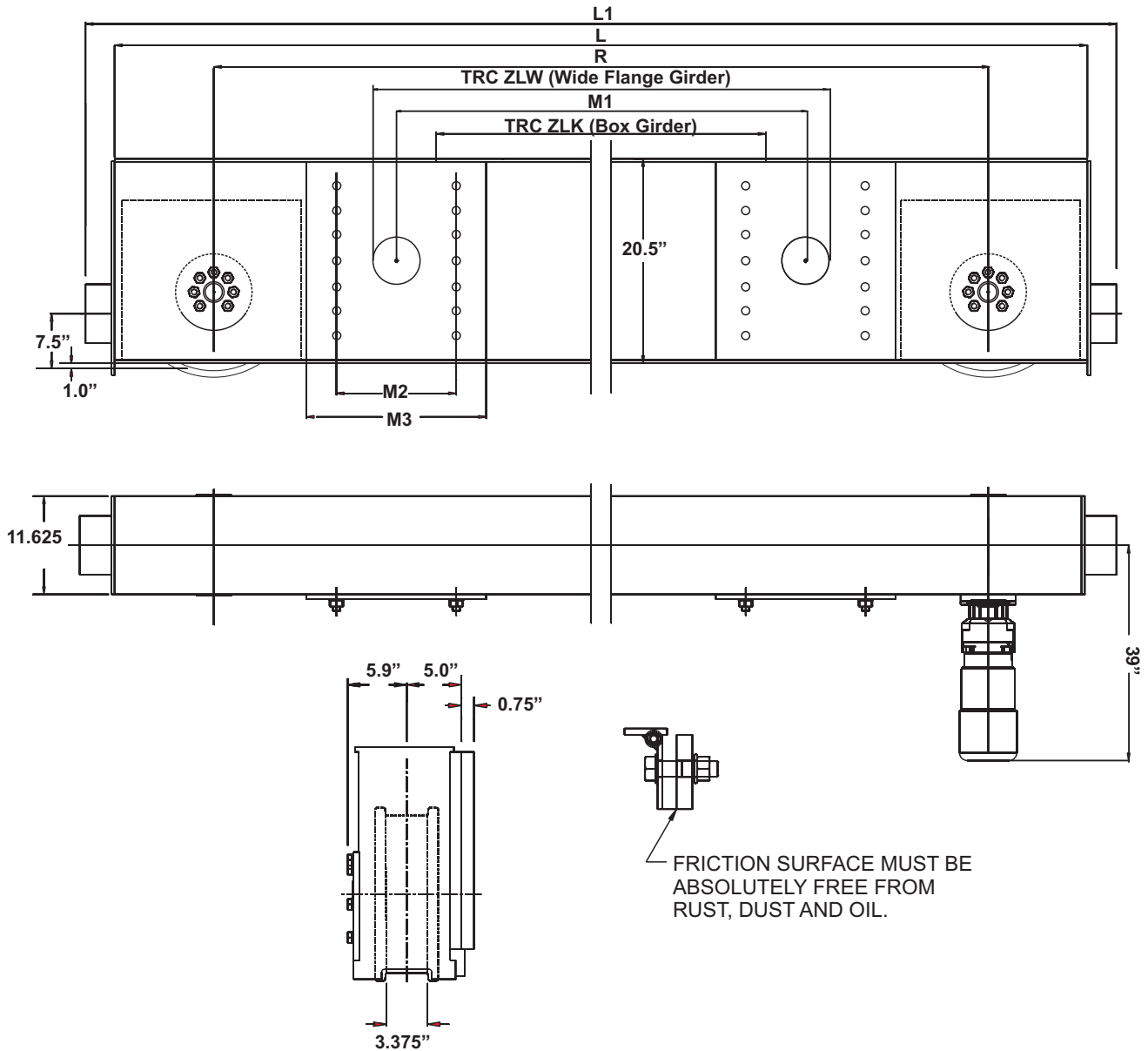


Specifications for EMH Style HSZ400 Top Running Double Girder Endtrucks 16 in. Diameter Wheels



Model No.	Wheel Load	Moving Mass Lbs.	120 fpm Motor HP	Wheel Base (R) Ft.-In.	L Ft.-In.	L1 Ft.-In.	M1 In.	M2 In.	M3 In.	TRC ZLK In.	TRC ZLW In.	Weight per Pair
HSZ-400.524.2900	58,450	200,000	2 x 5.0	9-6	11-2	12-0	75	16	21.25	63	78.75	4,645
HSZ-400.524.3200	58,450	200,000	2 x 5.0	10-6	12-2	13-0	79	20	25.25	63	78.75	4,850
HSZ-400.524.3800	58,450	200,000	2 x 5.0	12-6	14-2	15-0	94.75	20	25.25	78.75	98.5	5,180
HSZ-400.524.4100	58,450	200,000	2 x 5.0	13-6	15-2	16-0	114.25	20	25.25	98.5	N/A	5,340
HSZ-400.524.4600	58,450	200,000	2 x 5.0	15-0	16-8	17-6	118.25	24	29.25	98.5	N/A	5,840