

EMH Wire Rope Hoists

Dimensions and Specifications

Hoist Model: EH8500 HF
Trolley Type: Top Running for Double Girder Cranes

Reeving: 12 to 2

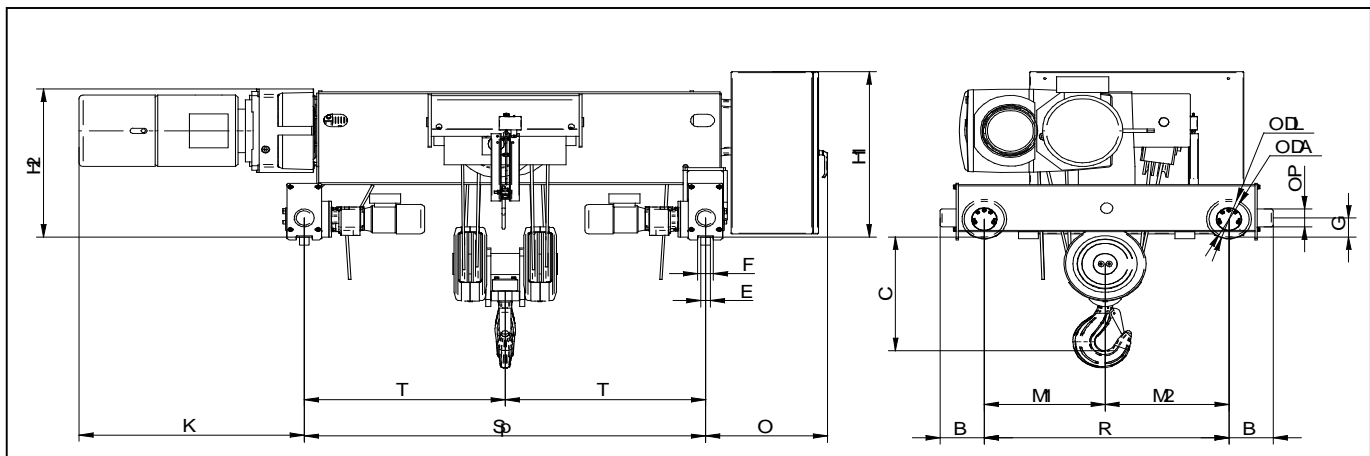
Capacity: 50 tons

| | | |
|-------------------|------------|--------|
| Rope Diameter: | 0.55" | 14 mm |
| Drum Diameter: | 14.06" | 357 mm |
| Hoist Motor HP: | 50 HP | |
| Trolley Motor HP: | 2x 2.5 HP | |
| Lifting Speed: | 14 FPM VFD | |
| Trolley Speed: | 80 FPM VFD | |

| Duty Service Classification | |
|-----------------------------|----|
| HMI | H4 |
| FEM | 2m |
| CMAA | D |
| ISO | M5 |

| Dimensions (inch) | | | | |
|--|---------|---------|----|--------|
| Refer to drawing below. Rail width E is for ref. | H1 | --- | C | 40.0 |
| | H2 | 42 | B | 11.90 |
| | K | 47 | M1 | 32.5 |
| | T | =SP*0.5 | M2 | 32.5 |
| | O | 26 | R | 65.0 |
| | F | 3.26 | DL | 340 mm |
| | E (max) | 2.6 | DA | 315 mm |
| | | | P | 4.72 |
| | | | G | 5.67 |

| Standard SP (trolley gauge): | | | |
|------------------------------|-------|----------|--------|
| | 30 ft | 50 ft | 70 ft |
| (May vary with lift) | 98.5" | 118.125" | 157.5" |
| Weight lbs (est.) | 9840 | 9930 | 10600 |



E·M·H®
Engineered Material Handling