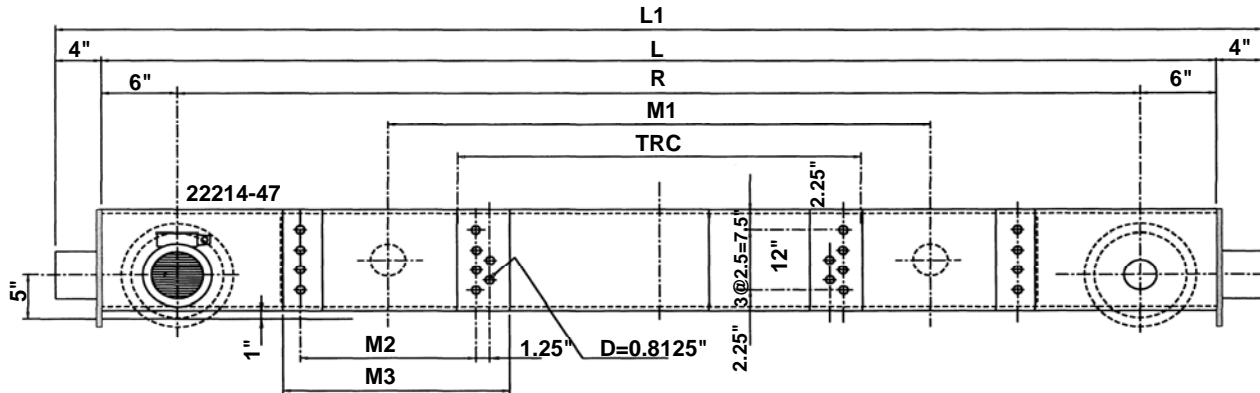
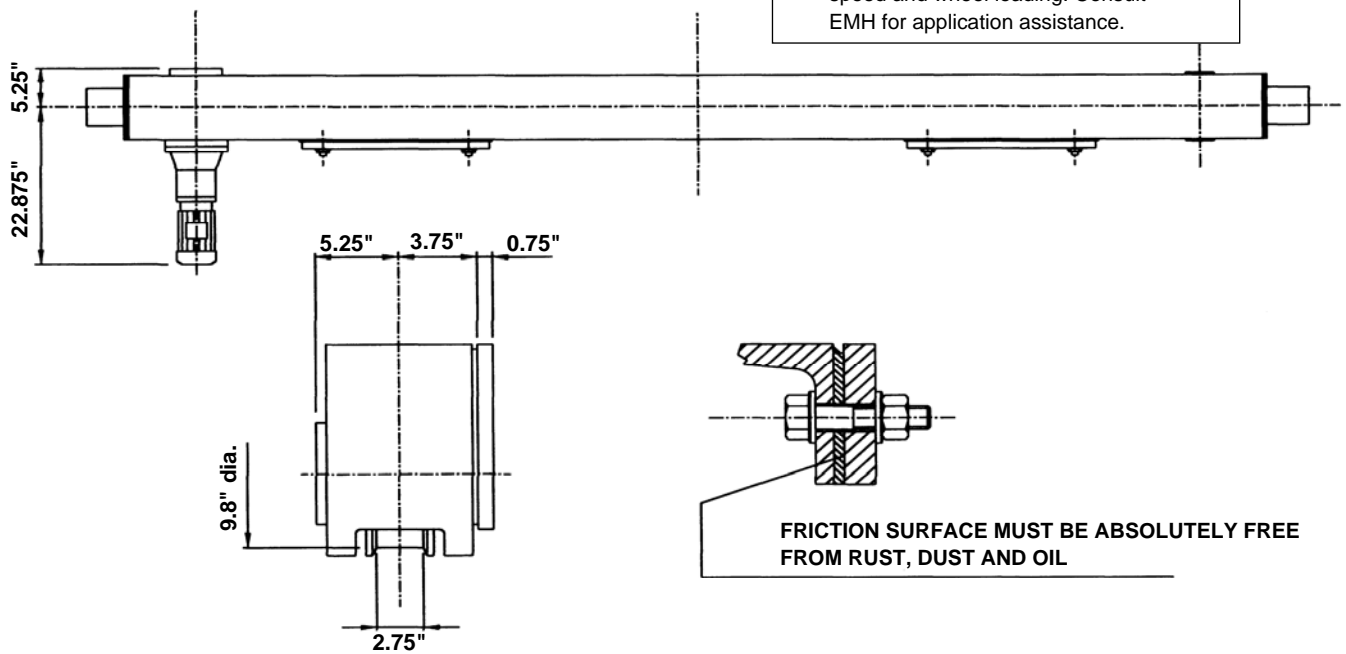


Specifications for EMH Style HS-250 Top Running Double Girder End Trucks 10 In. Diameter Wheels



Note: HS Endtrucks are designed with spherical roller bearings for high travel speed and wheel loading. Consult EMH for application assistance.



Model No.	Wheel Load	Moving Mass Lbs. 200 fpm VFD	Wheel Base (R) Ft.-In.	200 fpm Motor HP	L Ft.-In.	L1 Ft.-In.	M1 In.	M2 In.	M3 In.	TRC In.	Weight per Pair
HS-250.330.2700.3.16	29,250	64,000	8-10	2 x 3.0	9-10	10-6	71	12	17.25	63	2,160
HS-250.330.2900.4.16	29,250	64,000	9-6	2 x 3.0	10-6	11-2	75	16	21.25	63	2,240
HS-250.330.3200.4.16	29,250	64,000	10-6	2 x 3.0	11-6	12-2	75	16	21.25	63	2,290
HS-250.330.3800.5.20	29,250	64,000	12-6	2 x 3.0	13-6	14-2	94.75	20	25.25	78.75	2,710
HS-250.330.4600.5.25	29,250	64,000	15-0	2 x 3.0	16-0	16-8	114.5	20	25.25	98.5	3,120