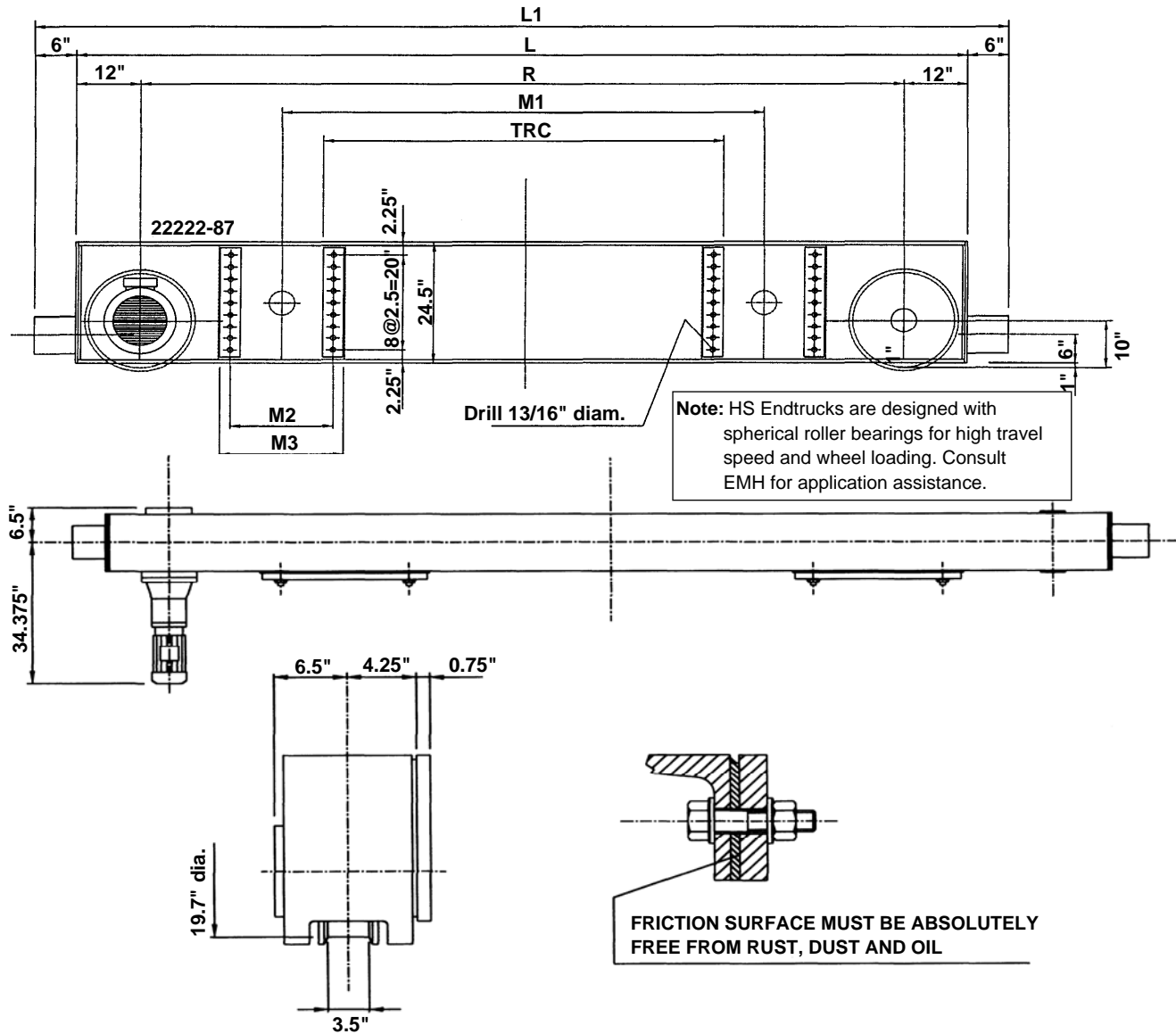


Specifications for EMH Style HS-500 Top Running Double Girder End Trucks 20 In. Diameter Wheels



Model No.	Wheel Load	Moving Mass Lbs. 200 fpm VFD	Wheel Base (R) Ft.-In.	200 fpm Motor HP	L Ft.-In.	L1 Ft.-In.	M1 In.	M2 In.	M3 In.	TRC In.	Weight per Pair
HS-500.650.3200.5.20	60,000	180,000	12-6	2 x 7.5	14-6	15-6	94.75	20	24	78.75	3,500
HS-500.650.4100.5.20	60,000	180,000	13-6	2 x 7.5	15-6	16-6	114.5	20	24	98.5	3,650
HS-500.650.4600.6.25	60,000	180,000	15-0	2 x 7.5	17-0	18-0	118.5	24	28	98.5	4,200