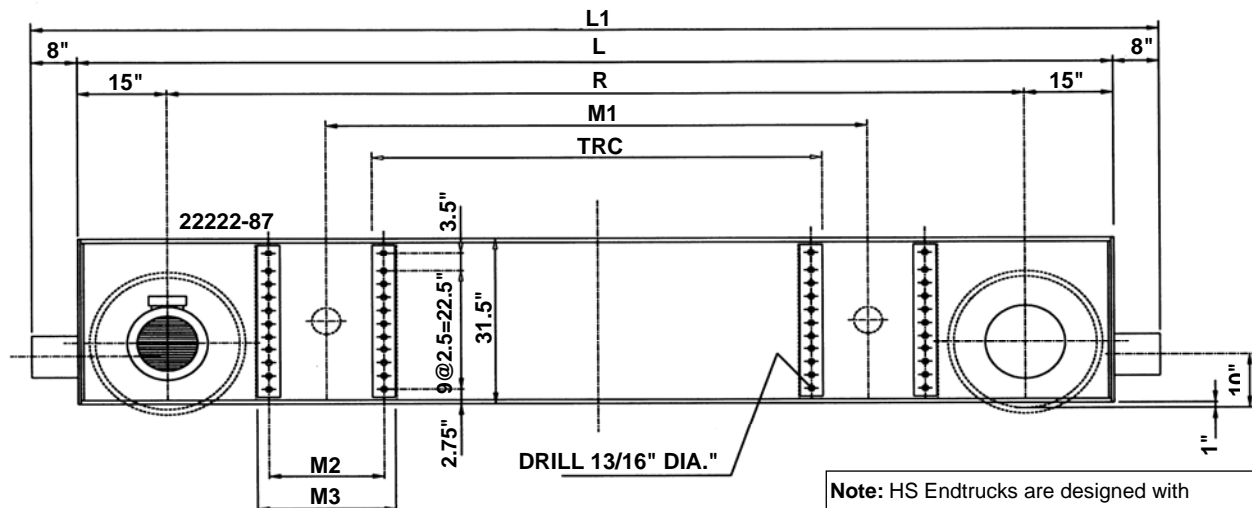
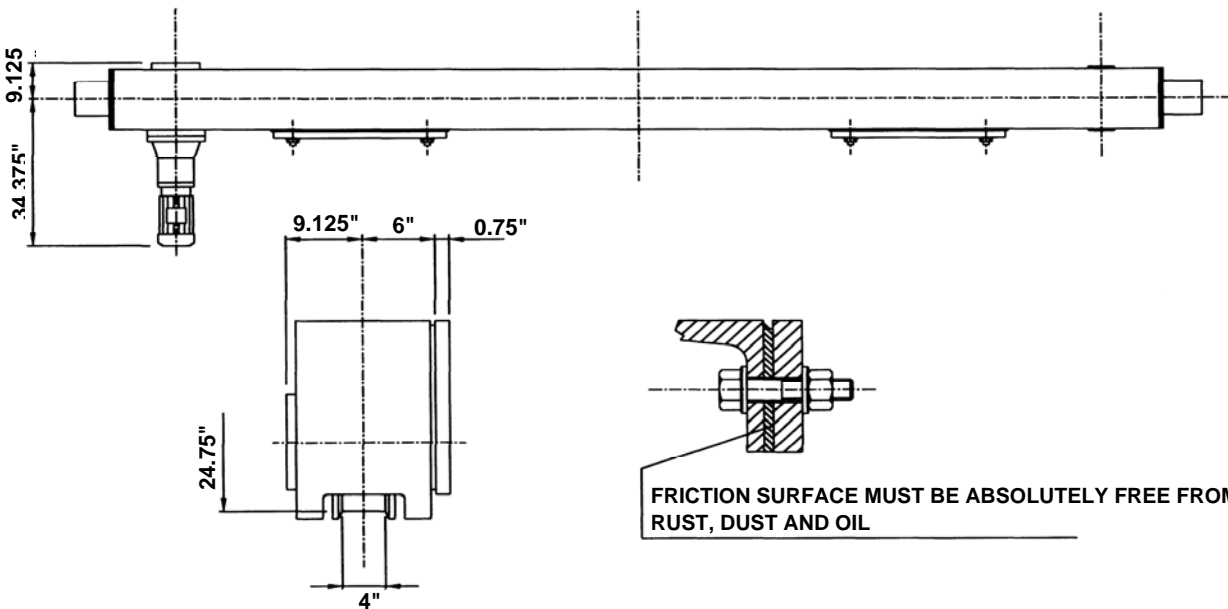


## Specifications for EMH Style HS-630 Top Running Double Girder End Trucks 24.75 In. Diameter Wheels



**Note:** HS Endtrucks are designed with spherical roller bearings for high travel speed and wheel loading. Consult EMH for application assistance.



Model No.	Wheel Load	Moving Mass Lbs. 200 fpm VFD	Wheel Base (R) Ft.-In.	200 fpm Motor HP	L Ft.-In.	L1 Ft.-In.	M1 In.	M2 In.	M3 In.	TRC In.	Weight per Pair
HS-630.825.3900.5.20	76,000	180,000	12-10	2 x 7.5	15-4	16-8	94.75	20	24	78.75	5,500
HS-630.825.4400.5.25	76,000	180,000	14-5	2 x 7.5	16-11	18-7	114.5	20	24	98.5	5,650
HS-630.825.4600.6.25	76,000	180,000	15-0	2 x 7.5	17-6	18-10	118.5	24	28	98.5	6,200