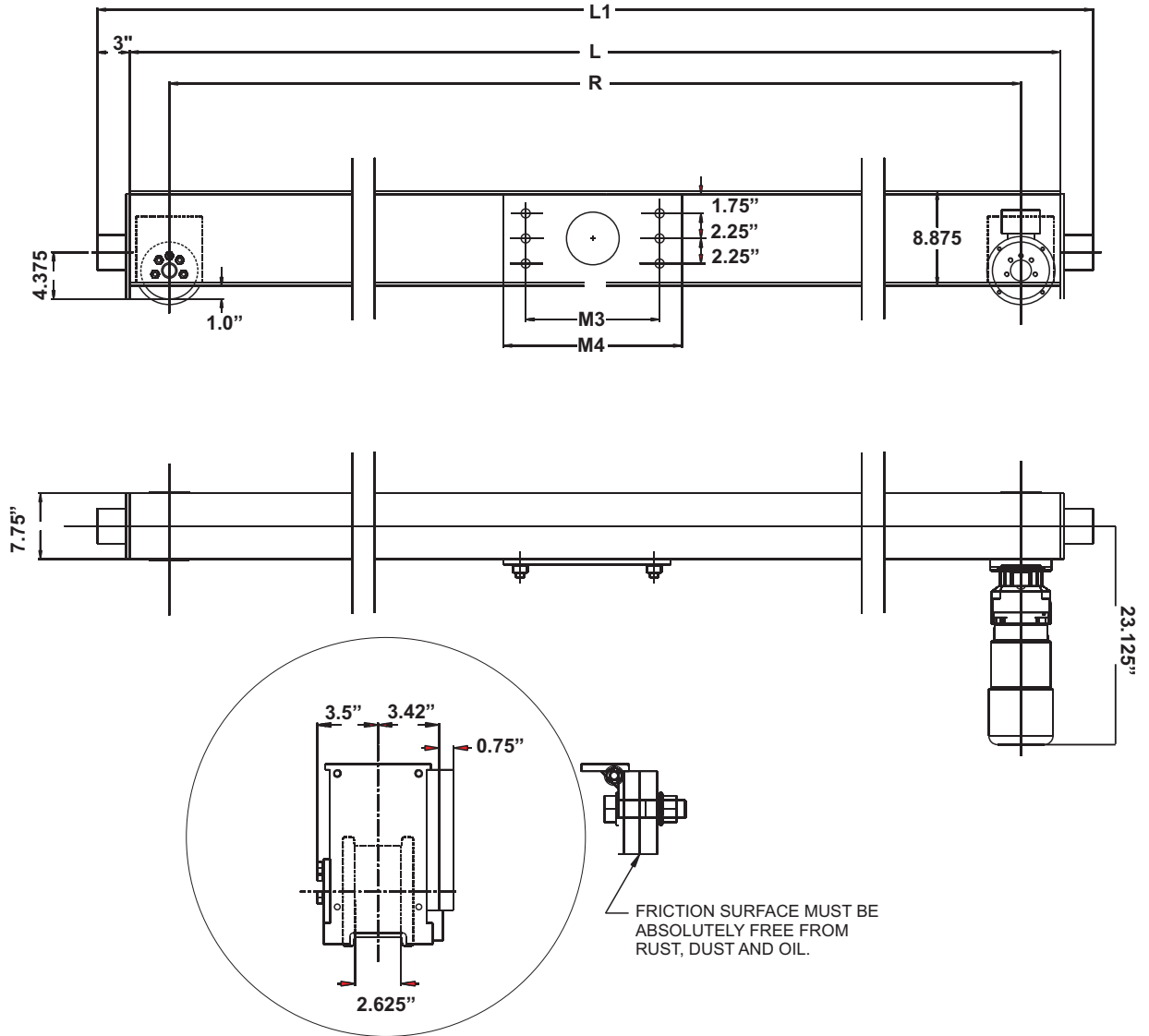


Specifications for EMH Style HSE130 Top Running Single Girder Endtrucks 5 in. Diameter Wheels



Model No.	Wheel Load	Moving Mass Lbs.	120 fpm Motor HP	Wheel Base (R) Ft.-In.	L Ft.-In.	L1 Ft.-In.	M3 In.	M4 In.	Weight per Pair
HSE-130.224.1500	11,240	24,000	2 x 0.75	5-0	5-7	6-1	12	15	592
HSE-130.224.1900	11,240	24,000	2 x 0.75	6-3	6-10	7-4	12	15	752
HSE-130.224.2200	10,610	24,000	2 x 0.75	7-3	7-10	8-4	12	15	812
HSE-130.224.2700	11,240	24,000	2 x 0.75	8-10	9-5	9-11	12	15	1122
HSE-130.224.3200	10,240	24,000	2 x 0.75	10-6	11-1	11-7	12	15	1282