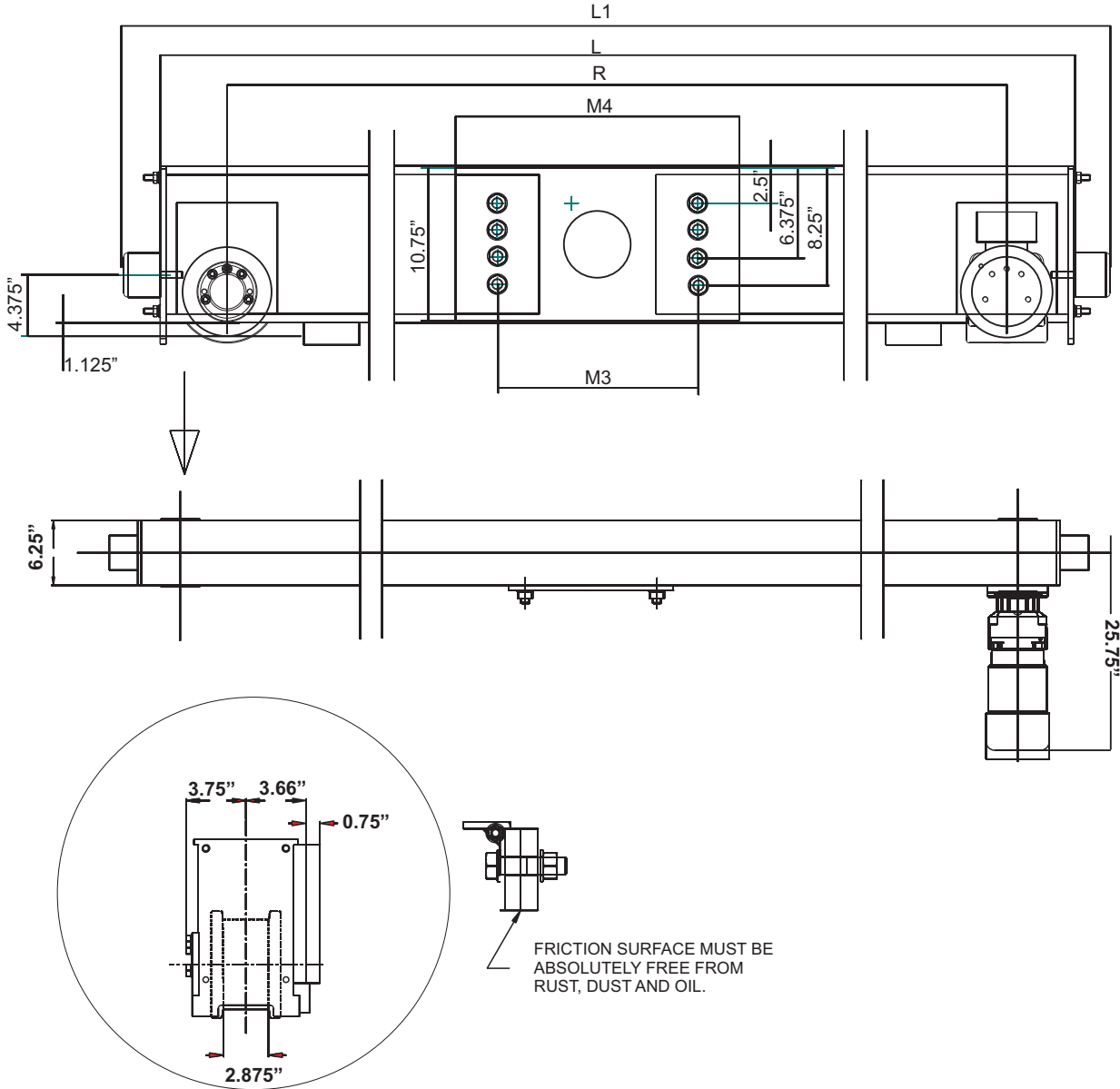


Specifications for EMH Style HSE160 Top Running Single Girder Endtrucks - 6.5 in. Diameter Wheels WheelBases:1900/2200/2700 mm.



Model No.	Wheel Load	Moving Mass Lbs.	120 fpm Motor HP	Wheel Base (R) Ft.-In.	L Ft.-In.	L1 Ft.-In.	M3 In.	M4 In.	Weight per Pair
HSE-160.274.1900	16,400	35,200	2 x 1.0	6-3	7-1	7-7	15	20	822
HSE-160.274.2200	16,400	35,200	2 x 1.0	7-3	8-4	8-10	15	20	1022
HSE-160.274.2700	16,400	35,200	2 x 1.0	8-10	9-4	10-6	15	20	1282