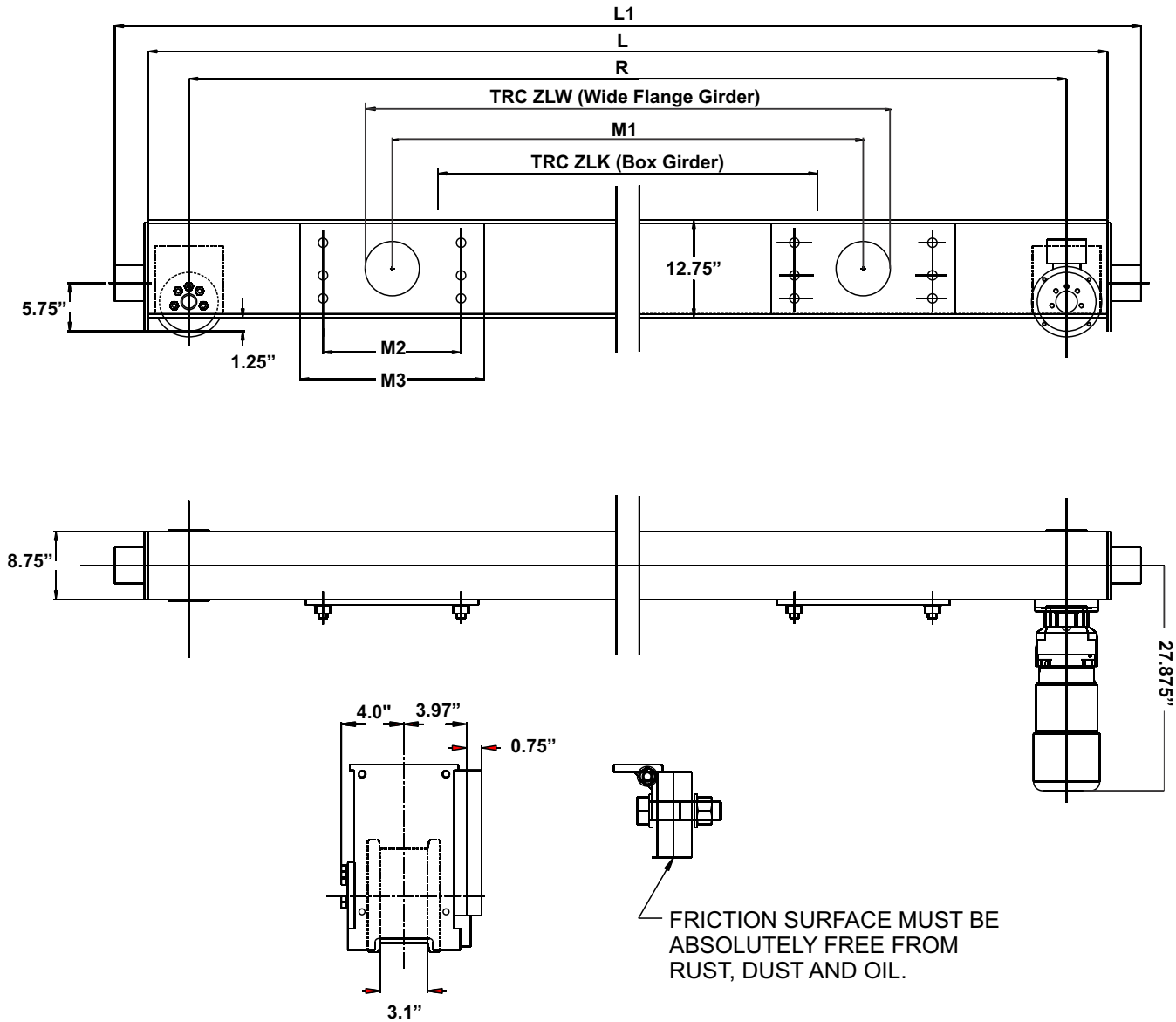


# Specifications for EMH Style HSZ200 Top Running Double Girder Endtrucks 8 in. Diameter Wheels



Model No.	Wheel Load	Moving Mass Lbs.	120 fpm Motor HP	Wheel Base (R) Ft.-In.	L Ft.-In.	L1 Ft.-In.	M1 In.	M2 In.	M3 In.	TRC ZLK In.	TRC ZLW In.	Weight per Pair
HSZ-200.324.2700	25,170	63,000	2 x 1.5	8-10	9-9	10-5	71	12	16	63	N/A	1,600
HSZ-200.324.2900	25,170	63,000	2 x 1.5	9-6	10-5	10-11	75	16	20	63	78.75	1,790
HSZ-200.324.3200	25,170	63,000	2 x 1.5	10-6	11-5	11-11	75	16	20	78.75	90.75	1,800
HSZ-200.324.3800	25,170	63,000	2 x 1.5	12-6	12-5	13-11	94.75	20	24	78.75	98.5	2,200
HSZ-200.324.4600	19,760	63,000	2 x 1.5	15-0	15-11	16-5	114.5	20	24	98.5	N/A	2,470