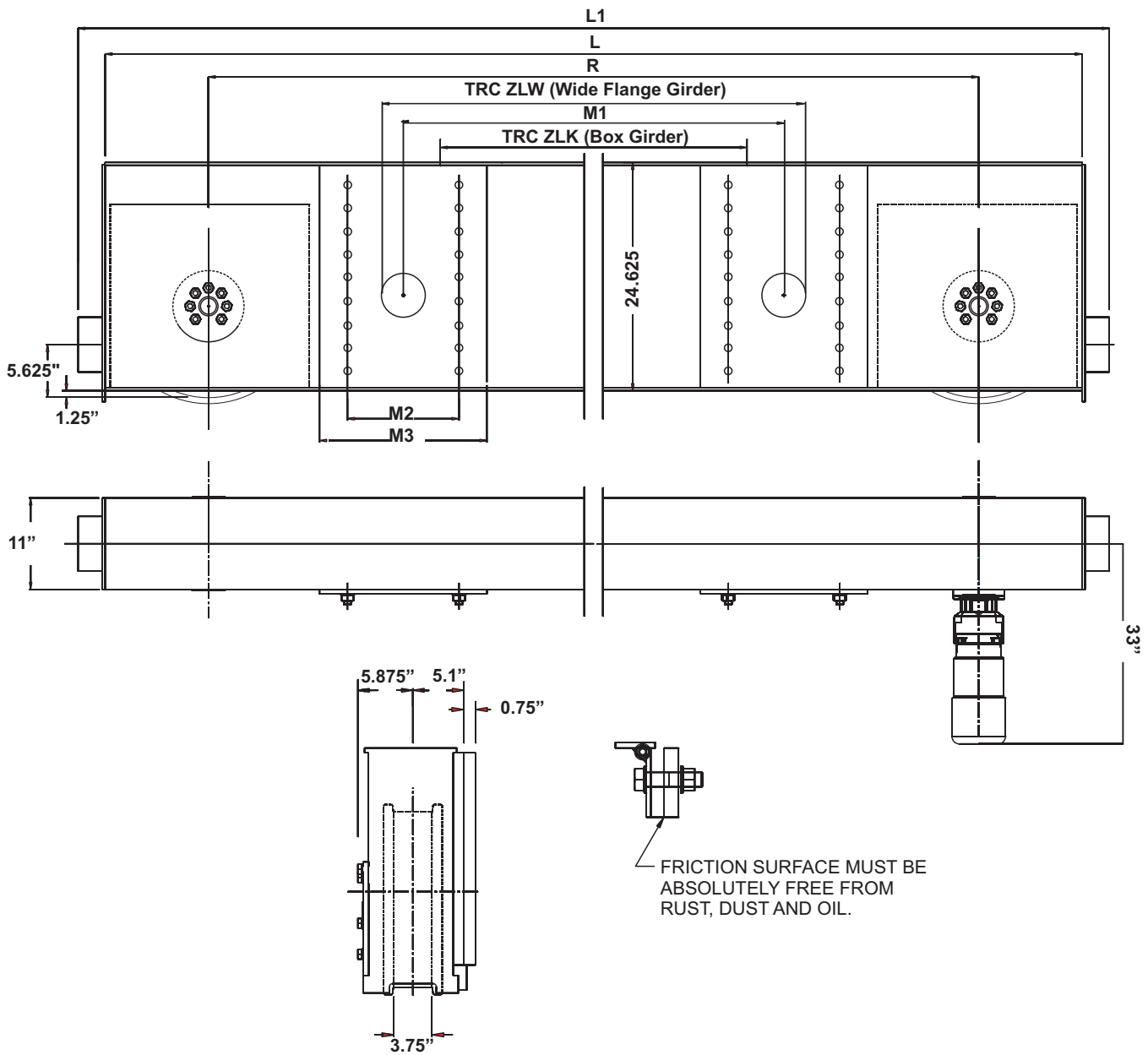


# Specifications for EMH Style HSZ500 Top Running Double Girder Endtrucks 20 in. Diameter Wheels



Model No.	Wheel Load	Moving Mass Lbs.	120 fpm Motor HP	Wheel Base (R) Ft.-In.	L Ft.-In.	L1 Ft.-In.	M1 In.	M2 In.	M3 In.	TRC ZLK In.	TRC ZLW In.	Weight per Pair
HSZ-500.625.3200	76,430	290,000	2 x 7.5	10-6	12-7	13-4	79	20	25.25	63	78.75	7,000
HSZ-500.625.3800	76,430	290,000	2 x 7.5	12-6	14-7	15-4	94.75	20	25.25	78.75	98.5	7,420
HSZ-500.625.4100	76,430	290,000	2 x 7.5	13-6	15-7	16-4	114.5	20	25.25	98.5	N/A	7,780
HSZ-500.625.4600	76,430	290,000	2 x 7.5	15-0	17-1	17-10	118.5	24	25.25	98.5	N/A	8,200