

EMH Wire Rope Hoists

Dimensions and Specifications

Hoist Model: EH8750 HF
Trolley Type: Top Running for Double Girder Cranes

Reeving: 12 to 2

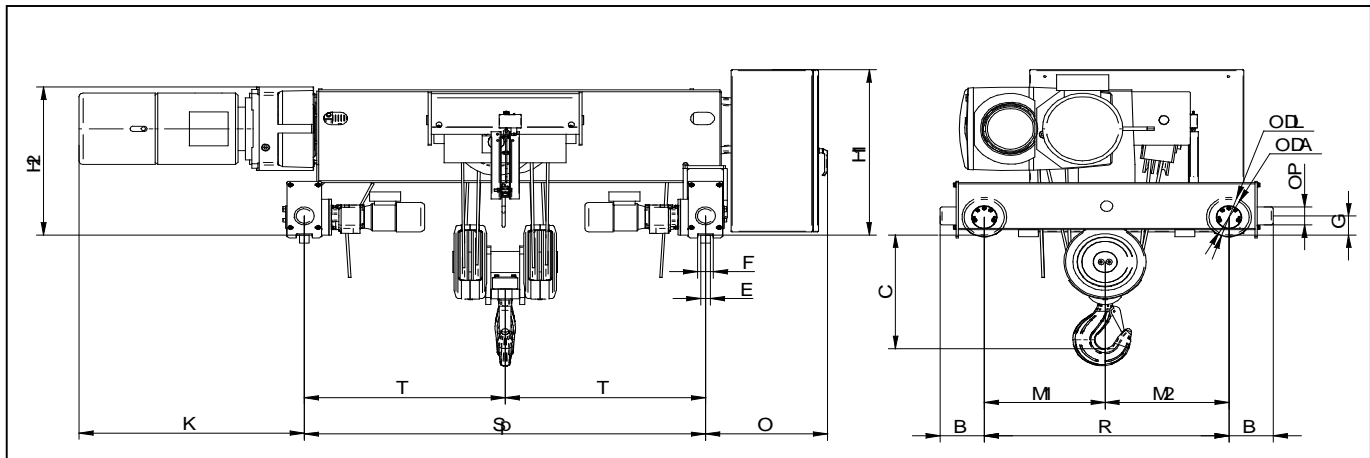
Capacity: 75 tons

Rope Diameter:	0.71"	18 mm
Drum Diameter:	24"	609 mm
Hoist Motor HP:	75 HP	
Trolley Motor HP:	2x 2.0 HP	
Lifting Speed:	14 FPM VFD	
Trolley Speed:	60 FPM VFD	

Duty Service Classification	
HMI	H4
FEM	2m
CMAA	D
ISO	M5

Dimensions (inch)				
Refer to drawing below. Rail width E is for ref.	H1	---	C	39.0
	H2	62	B	14.80
	K	48	M1	34.5
	T	=SP*0.5	M2	34.5
	O	28	R	69.0
	F	3.26	DL	440 mm
	E (max)	2.6	DA	400 mm
			P	5.90
		G	7.16	

Standard SP (trolley gauge):			
	30 ft	46 ft	70 ft
(May vary with lift)	78.75"	98.5"	137.75"
Weight lbs (est.)	19200	19900	21000



E·M·H[®]
Engineered Material Handling