

# EMH Wire Rope Hoists

## Dimensions and Specifications

Hoist Model: EM 5000Z

Trolley Type: Top Running for Double Girder Cranes

Reeving: 8 to 2

Capacities: 30, 35 and 40 tons

|                           |            |
|---------------------------|------------|
| Rope Diameter:            | 2x13 mm    |
| Drum Diameter:            | 11.625     |
| Sheave Diameter:          | 12.75"     |
| Hoist Motor HP:           | 2x24.2/3.9 |
| Trolley Motor HP:         | 2 x 1.5    |
| Speeds (fpm):             | 16/2.6     |
| Std. Trolley Speed (fpm): | 80 VFD     |

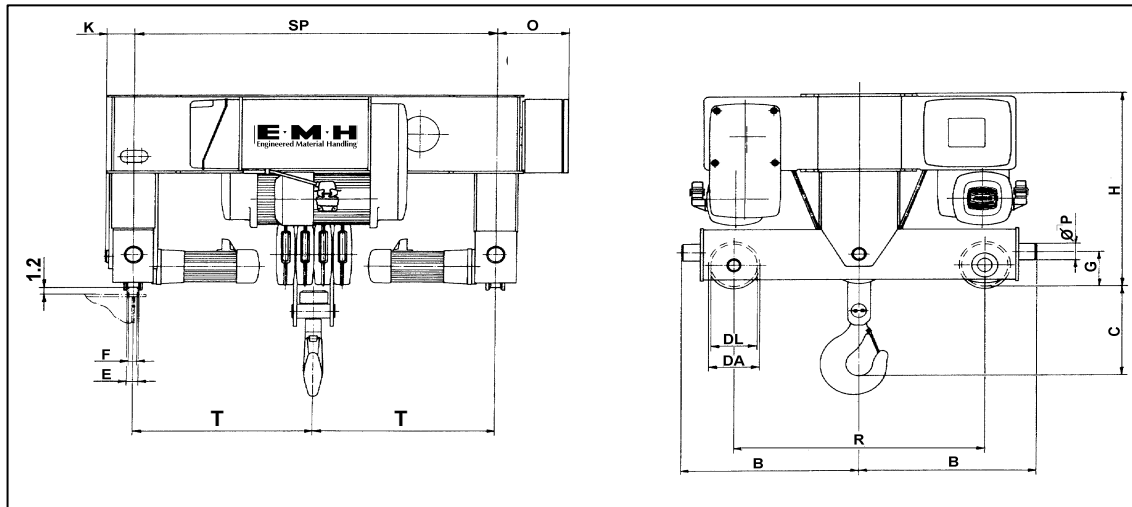
| Duty Service Classification |    | FEM | HMI |
|-----------------------------|----|-----|-----|
| Capacity in US Tons         | 30 | 2   | H4  |
|                             | 35 | 2   | H4  |
|                             | 40 | 1   | H3  |

| Dimensions (inches):   |       |        |
|--|-------|--------|
| Refer to drawing below. T and Standard SP (trolley gauge) dimensions plus weight shown in adjacent tables. | B:    | 35.125 |
|  | C:    | 25     |
|  | DA:   | 11     |
|  | DL:   | 12     |
|  | E:    | 2.25   |
|  | F:    | 2      |
|  | G:    | 4      |
|  | H:    | 40.5   |
|  | K:    | 6      |
|  | O*:   | 14.625 |
|  | P:    | 3.125  |
| R:   | 49.25 |        |

| Standard SP (trolley gauge):      |        |        |        |
|-----------------------------------|--------|--------|--------|
| Varies with lifts shown at right. | 20 ft. | 33 ft. | 50 ft. |
|                                   | 63     | 78.75  | 98.5   |
|                                   |        |        |        |

| Available Lifts (feet):   |    |         |            |
|---------------------------|----|---------|------------|
| T and Wt. vary with lift. |    | T (in.) | Wt. (lbs.) |
|                           | 20 | 31.5    | 5600       |
|                           | 33 | 39.375  | 5800       |
|                           | 50 | 49.25   | 6100       |

\* Dimensions O and U may vary depending on the type of control.



**EMH**  
Engineered Material Handling