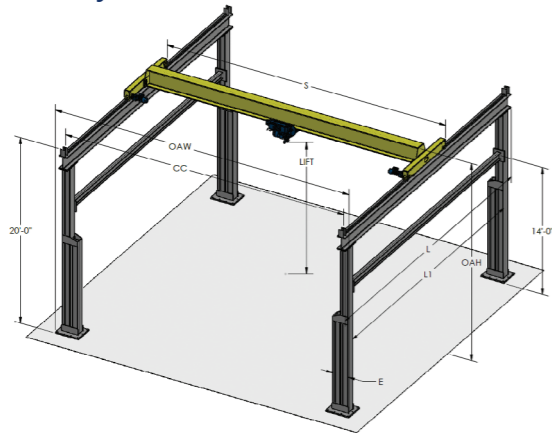


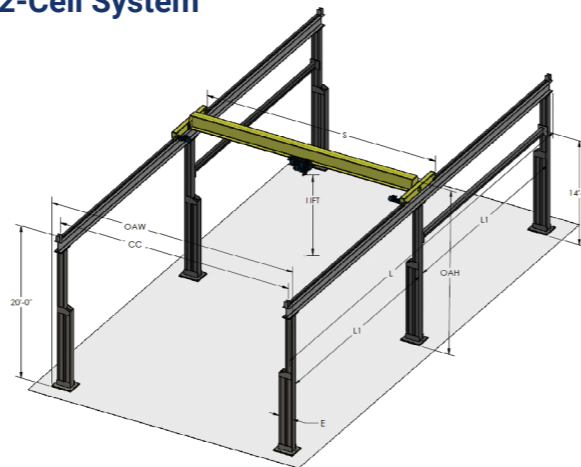
NOMAD[®]XW

Dimensions for
1-, 2-, 3-, and 4-Cell Systems

1-Cell System



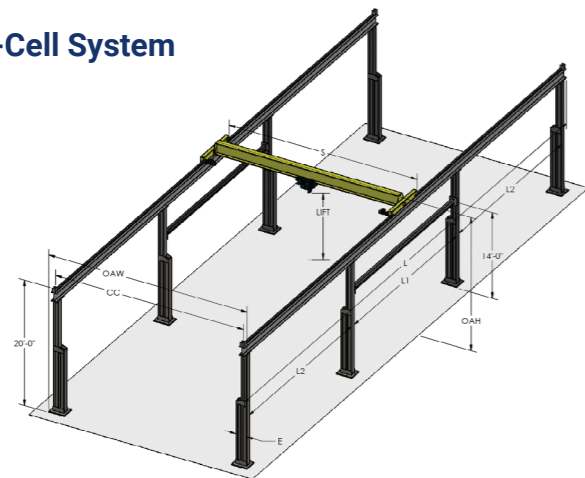
2-Cell System



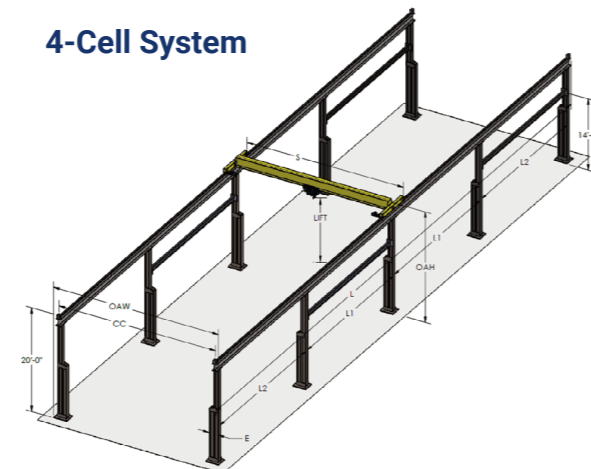
Front Dimensions (same for any number of cells)										
	3 tons		5 tons		7.5 tons		10 tons		15 tons	
S	50'-0"	60'-0"	50'-0"	60'-0"	50'-0"	60'-0"	50'-0"	60'-0"	50'-0"	60'-0"
Lift	16'-9.75"	16'-9.5"	16'-9.5"	16'-6.5"	16'-5"	16'-4.75"	16'-1.75"	15'-10.75"	15'-7.75"	15'-7.5"
E	19.5"	19.5"	19.75"	19.75"	20.25"	20.25"	20.25"	20.25"	28.25"	28.25"

Side Dimensions (Same for all capacities and widths)											
1 Cell			2 Cells			3 Cells			4 Cells		
L	L1	L2	L	L1	L2	L	L1	L2	L	L1	L2
20'-0"	18'-0"	n/a	40'-0"	19'-0"	n/a	60'-0"	20'-0"	19'-0"	80'-0"	20'-0"	19'-0"
25'-0"	23'-0"	n/a	50'-0"	24'-0"	n/a	75'-0"	25'-0"	24'-0"	100'-0"	25'-0"	24'-0"
30'-0"	28'-0"	n/a	60'-0"	29'-0"	n/a	90'-0"	30'-0"	29'-0"	120'-0"	30'-0"	29'-0"

3-Cell System



4-Cell System



Copy of EMH Warranty available on request



550 Crane Drive
Valley City, OH 44280
Tel: (330) 220-8600
Email: info@emhcranes.com
www.emhcranes.com



NOMAD[®]XW

**YOUR XTRA WIDE SPAN
FREESTANDING BRIDGE CRANE
SOLUTION SOURCE**



NOMAD XW– Your Freestanding Crane Solution for Longer Spans up to 60'

Our NOMAD XW, with headerless design, expands our freestanding product line to include longer crane spans of 50 and 60 feet. Eliminating the header allows the NOMAD XW to have an increased lift height, which is ideal for low headroom situations. NOMAD XW systems come in single and double girder configurations and can have multiple cranes on a single runway, if required.

NOMAD XW is designed with a double column and larger base plates to support the headerless structure. Standard NOMAD XWs require a concrete footer based on a minimum soil allowable bearing of 2,000 psf and minimum concrete strength of 3,000 psi. However, smaller, non-standard NOMAD XW systems with slab-on-grade requirements can be evaluated by engineering.

Key Features and Benefits of NOMAD XW Systems:

- Longer crane spans up to 60 feet
- Headerless design for increased lift
- Capacities up to 15 tons

Each NOMAD XW Freestanding Crane System Includes:

- Steel freestanding structure with double columns
- Standard hand-held radio control
- Inverter controlled hoist trolley and bridge with end trucks
- Runway electrification
- Instructions for bridge construction and crane assembly, plus Maintenance Manual

If you've ruled out an overhead crane, NOMAD XW can give you all the material handling you need at a price you'll appreciate. Call EMH today for details.

ISO 9001: 2015 Certified

NOMAD XW comes in single and double girder configurations

Runway Electrification is 100-amp, galvanized steel, "finger safe" conductor bar. Superior conductivity, easy to install and maintain.

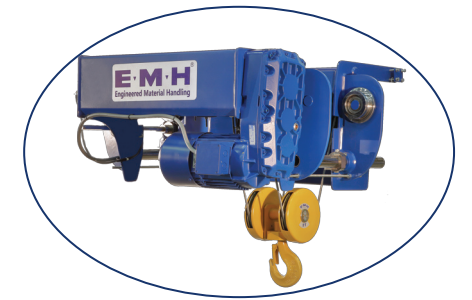
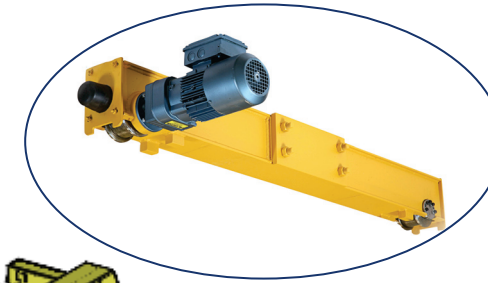
Quick Disconnect Plugs Pre-tested, multi-pin Quick Disconnect Plugs and socket connections provide fast, safe, and mistake-proof electrical assembly.

NOMAD XW headerless design allows for crane widths up to 60 feet with capacities up to 15Ton. Contact EMH for prices and specifications.

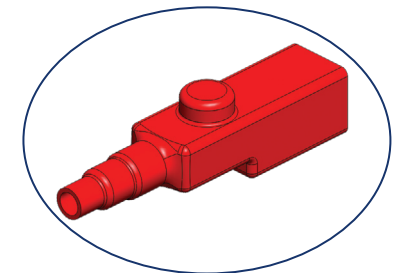
Side View of Multi-Cell NOMAD XW System

NOMAD XW Freestanding Cells are available in runway lengths of 20, 25, and 30 feet. Multiple cells can be combined for long runways; existing systems can be retrofitted with additional cells. See back cover for dimensional information.

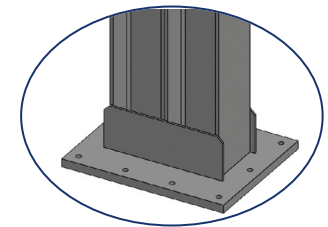
EMH Top Running Endtrucks with travel speed of 80 or 120 FPM (VFD) complete with mounting plates, bolts, and bumpers.



EMH Wire Rope Hoist Lift 20 feet available Lifting Speed: 16/2.6 FPM Trolley Speed: 65 FPM (VFD)



End Power Feed is standard. (Fuse disconnect provided by customer.)



Double Column Base Plate design requires NOMAD XW systems to be installed with footers. Column loadings and reactions provided upon request.

Bridge Control Panel with lockable mainline disconnect mainline fuse, mechanical and electrical interlocking contactors, and motor protection. Power and control connections pre-wired through terminal strips to quick disconnect plugs. NEMA-12 enclosure. (Customer is responsible for piping power to runway conductor.)



Standard Radio Control Hand-held AAA operated radio controls are standard on all NOMAD XW systems. Upgrade to rechargeable model optional. Sliding Push Button controls available as an option. **Audible alarm included in conformance with OSHA Standards.**



NOMAD XW Installation & Maintenance Manual Instructions for bridge construction and crane assembly, plus two copies of the **Maintenance Manual**, are included with each NOMAD XW system.