

EMH Double Girder Hoists

• Standard and Custom Engineered

• EM Model HF Pre-Engineered Hoist



EMH offers a complete selection of standard packaged and custom engineered hoists configured as double-girder trolleys. Our standard wire rope can handle standard industrial usage for loads to 50 tons, and has the same state-the-art features as the monorail model shown inside. Any operation with a high number of cycles and large capacity can benefit from EMH engineered hoist's reliability. Its modular and open winch design facilitates maintenance and repair, and can be easily adapted for special lifts and speeds. Standard capacities range from 10 to 300 tons. All motions are inverter-controlled for infinitely adjustable speed and prolonged motor and brake life.

The EMH double-girder hoist is the perfect choice for dependable large capacity or heavy-duty overhead material handling.

Our EM Model H Engineered Hoist Trolley was designed for heavy service Class D applications such as Steel Service Centers, Heavy Steel Fabricators, and Precast Concrete Facilities.

• EM Model H Engineered Hoist

Complete Cranes

- Capacities up to 300 tons • Spans up to 160 feet • Single and Double Girder
- Top & Under Running • Gantries • Flexible Crane Systems • Free Standing Systems



Overhead Cranes



Gantry Cranes



NOMAD® Free Standing Cranes



AL SYSTEM™ Workstation Cranes



EMH T-Slot Design

Crane Components

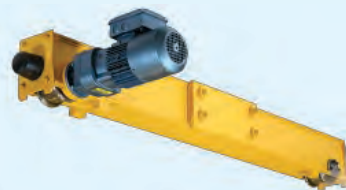
- Standard Wire Rope & Chain Hoists • Custom Engineered Hoists for Class D and E Applications
- Single & Double Girder, Top & Under Running End Trucks • System 2000 Crane Kits



Wire Rope Hoists



Controls



Endtrucks & Wheel Blocks



System 2000 Crane Kits

EMH Cranes and Components Sold and Serviced By:



Valley City, Ohio is the site of our EMH Corporate Headquarters and manufacturing plant. Our modern facility provides us with plenty of production space, making EMH readily adaptable to the needs of 21st century industry.

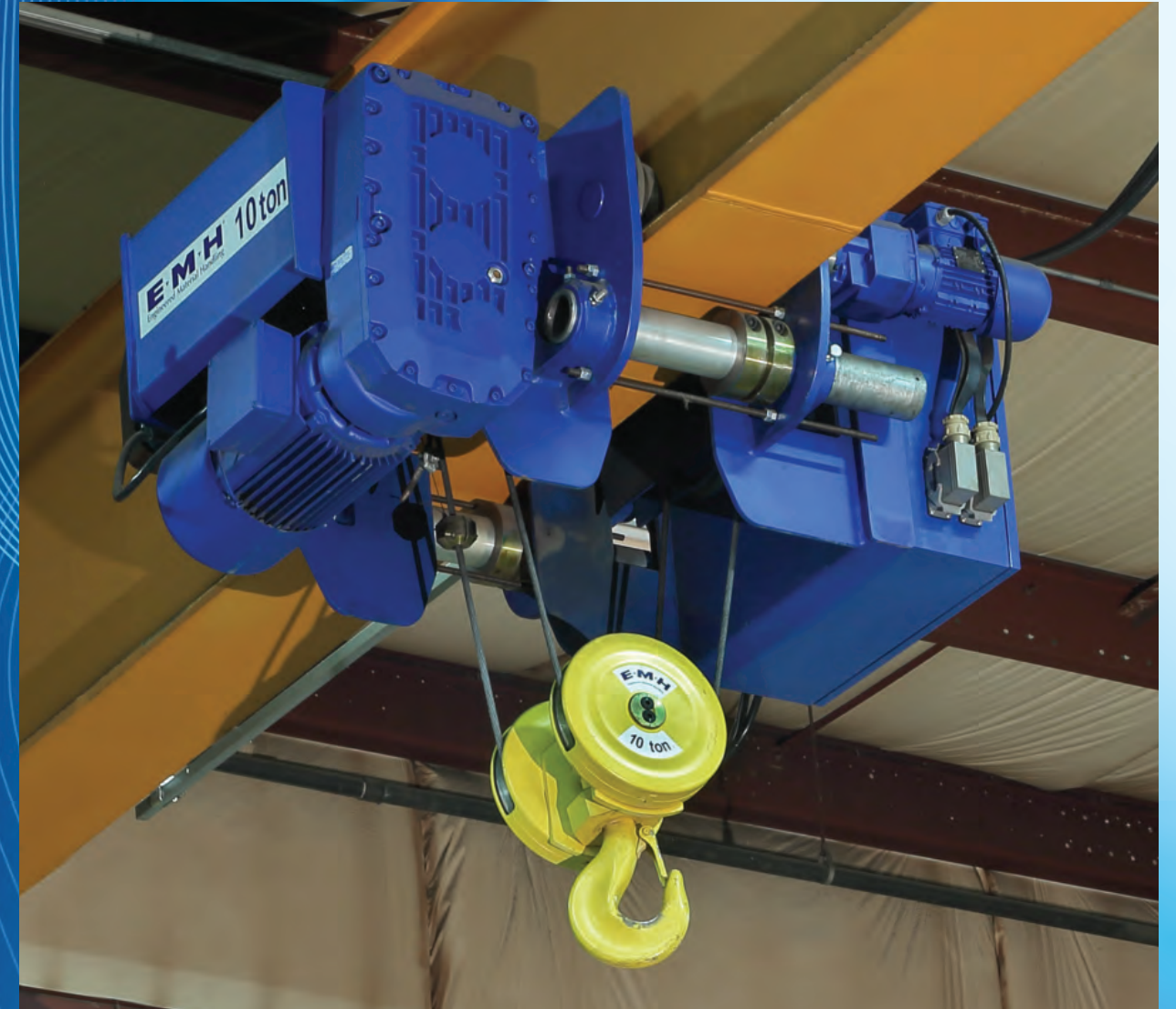


550 Crane Drive • Valley City, OH 44280 • Tel: (330) 220-8600 • Fax: (330) 220-0204 • www.emhcranes.com • Email: info@emhcranes.com

© Copyright 2021. Engineered Material Handling Inc. All Rights Reserved.

EMH®

Engineered Material Handling



New EG Series Wire Rope Hoists

New EMH EG Series Monorail Hoists provide a price and performance ratio that compares favorably with the best the industry has to offer:

Standard Features Include:

- Serial production with uniform quality
- Modular construction with optimally matched components
- Trolley designed with efficient flange width adjustment
- Flat tread wheels as standard
- Two lifting speeds of either 4:1 or 6:1 speed ratio
- TEFC motors designed for optimal cooling
- Class F motor insulation
- Lifetime lubricated bearings and gear reducers
- High quality gearing for smooth and quiet operation
- DC rectified disc brakes for Hoist and trolley
- Block-operated limit switch per code is standard
- Geared upper and lower limit switches
- Lang-lay preformed high-strength wire rope with steel core
- Heavy-duty rope guide with independent guide bar
- Control-mounted in spacious NEMA 12 enclosures
- Heavy duty bottom block with safety latch



Gear Type Limit Switches

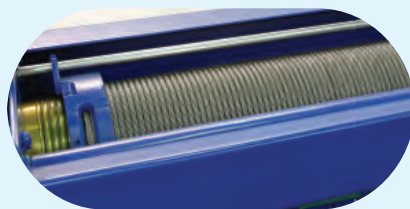
Easily adjustable dual upper and single lower bring the load hook to a positive stop at any desired position, both hoisting and lowering.



Hoist Motor & Gear Train

Both designed and built to meet the most severe demands of hoisting service that requires frequent reversal and high starting torque. The motor is work rated, with Class F insulation.

The Gear Train consists of hardened and polished helical gears and pinions. Compact design with low weight/output ratios provide a highly efficient, quiet and long lasting operation.

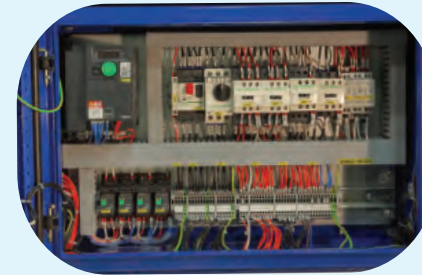


Rope Guide

Prevents the rope from being unbraided and cut while protecting the operator. The guide smoothly follows a separate guide bar, independent of the hoist frame.

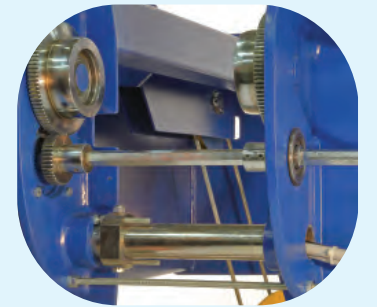
EG Hoist Panel

A programmable smart relay controls the hoist high and load speeds, and times starting and stopping to minimize hoist motor heating. VFD trolley module, motor protectors, circuit breakers and IEC contactors all housed in a NEMA 12 control enclosure. Klaxon hoist motor protection is standard.



Trolley Drive

Consists of a TEFC inverter duty motor and two speed infinitely variable-speed control. D.C. disc brake is standard. Drive shaft is hexagonal for precise reliable travel and elongated so no assembly is required for different flange widths.



Large diameter, machine tool steel quality wheels and drive pinions. Available for almost any flange width or beam style.



Disc Motor Brake

A DC rectified magnet-actuated Disc Motor Brake is automatically applied in the event of power failure. These self-adjusting and virtually maintenance-free brakes are provided with asbestos-free, non-polluting brake linings. They have an expected service life of one million operations before requiring the first adjustment.



Quick Disconnect Plugs

Pre-tested, multi-pin Quick Disconnect Plugs and socket connections provide fast, safe and mistake proof electrical assembly.



Overload Limit

Overload limit monitors the load to prevent lifting more than the capacity of the hoist. Typically set at 10% over capacity. A block operated limit is also included as required by code.

EG Series Monorail Hoists – 1 to 15 Ton Capacity